

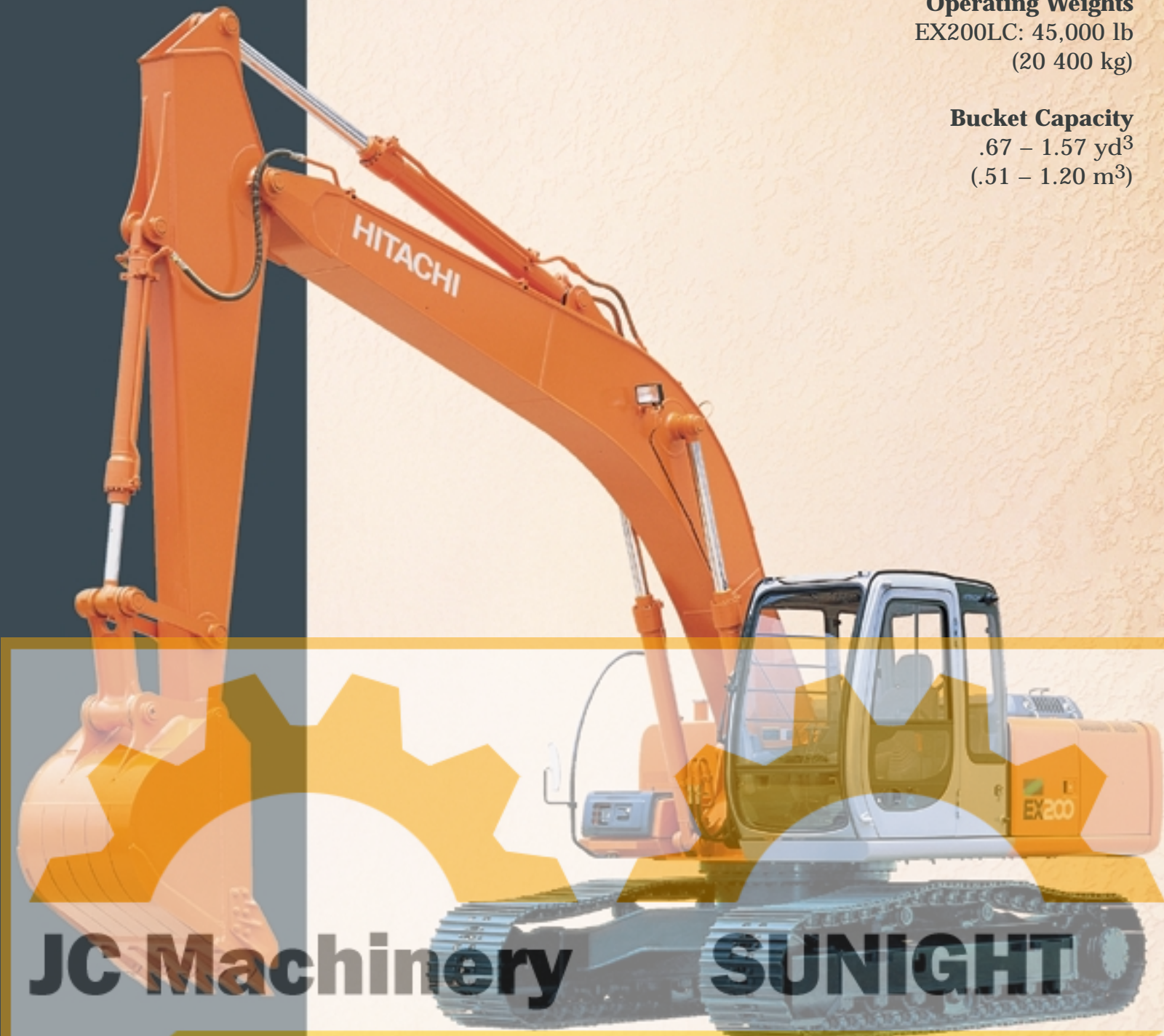
HITACHI

SUPER EX200-V

Rated Engine
HP: 132 (98 kW)

Operating Weights
EX200LC: 45,000 lb
(20 400 kg)

Bucket Capacity
.67 – 1.57 yd³
(.51 – 1.20 m³)



JC Machinery

SUNIGHT

excavatorhunter.com

SUPER EX200-V

Putting Technology To Work

Model	Operating Weight	Power	Travel Speeds	Max. Lift Capacity	Gradeability	Traction Force
EX200LC	45,000 lb (20 400 kg)	132 HP (98 kW)	0-3.4 mph (0-5.5 kph)	20,900 lb (9 480 kg)	35° (70%)	38,100 lb (17 300 kg)

Hitachi's Super EX200 puts advanced technology to work. Rugged enough to stand up to your toughest jobs, with "Human Touch" engineering to make getting those jobs done a lot more comfortable. They are built to survive, built to perform, and built to give you real value for your dollar.

Specifics

- Isuzu A-6BG1T turbo-charged, direct injection diesel engine meets all EPA clean air requirements.
- *Dash-5* engine/hydraulic control with three power modes, a power boost button, and four work modes.
- Power modes:
 1. **Normal:** Standard operation.
 2. **H/P:** Increased engine rpm and horsepower.
 3. **E:** Maximum fuel efficiency in light duty applications.
- Work modes:
 1. General Purpose
 2. Grading
 3. Precision
 4. Attachment
- Cab mounted on six fluid-filled, vibration dampening, shock absorbing mounts.
- Compact travel motor design; protected piping reduces opportunity of damage.

Features

- The updated work modes provide power in the order of the inherent priority for the job at hand. For example, in the Grading Mode, the arm rolls in slowly and powerfully while rolling out quickly for efficient grading. The Attachment Mode provides automatically adjusted oil flow to meet the requirements of the attachment.
- The Super EX200, as with all Hitachi excavator models, is built to maximize performance, reliability, and operator comfort through optimum design and quality components. The Isuzu engine is matched to the hydraulic pump for outstanding multiple function performance. The undercarriage, carbody and front attachment are all balanced and designed for maximum strength. All of this means that your Hitachi EX200 will work economically and productively for years and for thousands of hours at minimum operating costs.

JC Machinery SUNIGHT
excavatorhunter.com

Operator Comfort:

A Top Priority

Sitting in one place, all day, operating a machine productively takes concentration and dedication to doing a good job. It also means that a smart owner is going to do everything possible to make sure his operator is comfortable in the cab. The Hitachi EX200 is an excellent example of how comfortable a well-designed cab can be.

The widest cab in its class: 3 ft. 4 in. (1 005 mm). Lots of leg room, wide side door. The ergonomically-designed seat is fully adjustable with tilting armrests, tilting back, floating or solidly fixed seat, headrest tilt, and seat raise/lower.

AM-FM Radio



The hand control levers can be raised or lowered to match the operator's build, and the controls can either glide forward or back with the seat or remain fixed while the seat moves.

The work modes, power modes, air conditioning controls, and dial-type engine speed control are all located beside the operator.

Powertrain: Efficient, Powerful

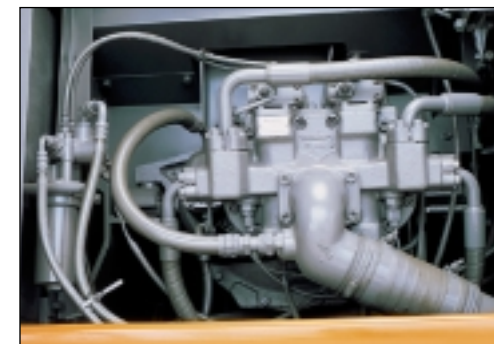
Powerful, Clean & Quiet

Isuzu A-6BG1T six-cylinder turbocharged diesel engine puts out power to spare. With 132 horsepower (98 kW), this engine meets EPA and CARB regulations. Maximum torque is 340 lbf•t (47 kgf•m).



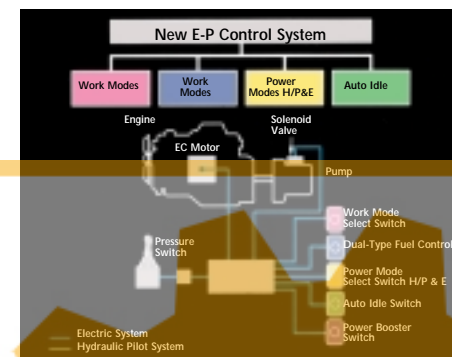
Bulkhead Separates Engine From Hydraulic Pumps

A steel bulkhead separates the hydraulic pumps and engine. It keeps engine and pump compartments cleaner for easier maintenance and helps to minimize noise generation.



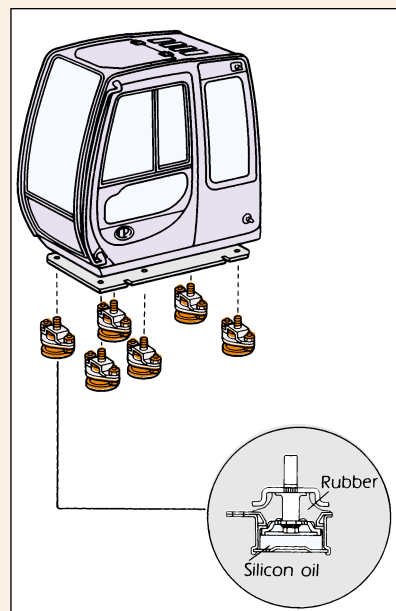
Enhanced E-P Pump Control

A sophisticated micro-computer system guided by multiple actuators is standard on the EX200. Hitachi is renowned for the smooth operation of its excavators and this model is no exception. The Dash-5 controls provide quick, accurate response to multi-function swing-lift-bucket curl operations. A power boost feature is activated when the operator pushes a thumb button providing 6% more hydraulic power for eight seconds.

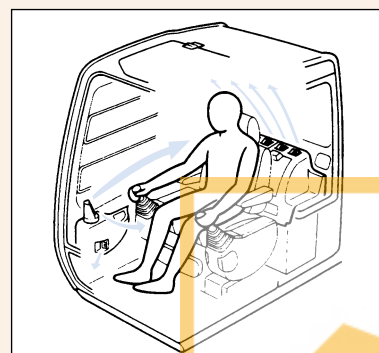


Enhanced Cooling Protection

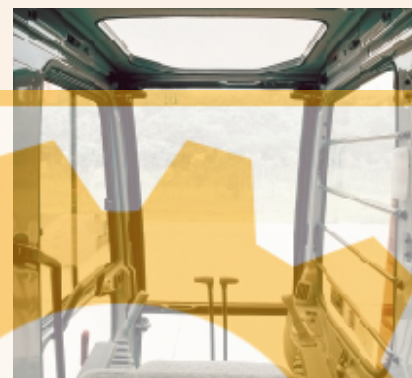
The EX200 features a large 6.1 U.S. gallon (23 liter) radiator coolant capacity, a tightly fitting fan shroud and high capacity fan design. The engine is well ventilated, including vents on the engine cover.



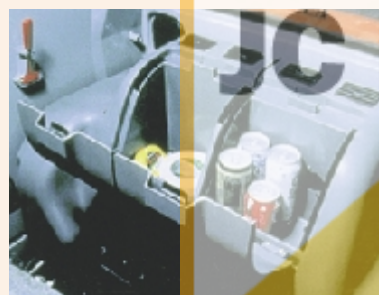
The cab floats on six fluid-filled elastic mounts that smooth out shocks and jolts.



Air conditioning and a "Hot and Cool" box are standard on the EX200. The large capacity unit features front and rear rotatable louvers. Automotive-type controls blend hot and cold air to provide the perfect temperature.



The wide operator's view makes safe, productive operation easier to accomplish. The front window crosspiece is lower for improved downward visibility. The right side window is bigger and the overhead window is larger.



EX200: Smooth Control, Balanced Weight For Maximum Output

Work Modes For Increased Performance

The four work modes have been enhanced from prior models.

- ① The General Purpose Mode is appropriate for general digging and truck loading. All circuits work together.
- ② The Grading Mode provides priority to the combined operation of boom raise, stick forward and bucket adjustment while limiting control response so that the movement is smooth.
- ③ The Precision Mode keeps the front attachment moving precisely and slowly.
- ④ The Attachment Mode is designed to automatically match the oil flow requirements of selected attachments such as a hydraulic hammer. Additional piping is required (optional).



Great Machine Balance

One of the EX200's secrets for operator acceptance is that the machine is so well balanced. It is easier to get fuller buckets faster with the EX200. This allows the operator to use all the power available. This outstanding balance makes the operator productive while giving a higher level of confidence and comfort.

H/P and E Modes For Increased Efficiency

- The **Normal** mode is for normal or average applications. The engine runs at an efficient maximum speed for longest life and general economy. The hydraulic pump runs at a baseline 100%.
- The **H/P** mode provides the full power of the EX200 on command. This function increases engine rpm when activated, thus providing more horsepower when needed – up to 142 hp (105 kW).
 - Engine rpm automatically increases when the arm-in function meets resistance.
 - Automatically switches back to normal rpm and 132 hp (98 kW) when resistance is overcome for fuel savings.
- The **E** mode provides 94% of full power while providing 15% more fuel efficiency. It is appropriate for light-duty work because it allows you to work longer before refueling.



Premium Quality Design and Manufacture

Hitachi excavators are designed to work smoothly and dependably. The EX200 features an excellent cab that is comfortable yet will withstand years of hard use. The carbody and undercarriage are rugged and require minimal maintenance. The Hitachi *Dash-5* models incorporate the best in ergonomic design and features to provide an outstanding package of productivity, reliability and lasting value.

Power Boost At Your Thumb

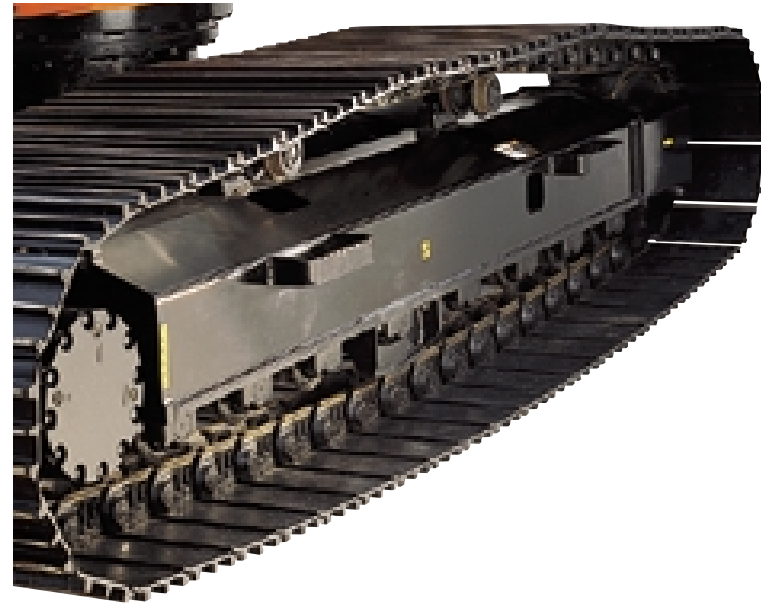
A thumb-actuated power boost switch provides an additional 6% of hydraulic power for about eight seconds in the **Normal**, **E** or **H/P** mode.



“D” Section Frame

The “D” section frame is designed to resist deformation. It protects the upperstructure from damage due to lateral impacts during swing.

Long-Life, High-Hour Durability



Longer-Life Undercarriage

Hitachi undercarriages feature premium grade tracks with large track links fitted with struts for added durability. Pin seals prevent dirt in the bushings and reduce inner wear. The tracks feature heavy-duty track links, front idlers, upper/lower rollers and track center guard.



Round Travel Motor Covers

Round travel motor covers provide a higher resistance to deformation.



Rugged X-Frame

The tough tractor-type undercarriage and X-form center frame assure superb durability.



Round Hydraulic Tank

A round hydraulic tank provides superior circulation of the hydraulic oil so that it's kept cleaner and more evenly cooled.



Track Center Guard

Track center guard keeps track links engaged.



Reinforced Front Attachment

The boom is made of thickened plates at the boom foot and three inside bulkheads. The arm has thickened plates at its top, sides and bottom to increase ruggedness and to resist twisting.



Remote Lube

All lube points are clustered in three central areas.



Air Cleaner Stored Inside

An air cleaner, stored inside the upperstructure cover, allows simple replacement of elements from the ground.



Super Strong Piping

Hitachi is legendary for its strong, long-lasting hydraulic hose, piping and fittings. This provides outstanding reliability and cleanliness.



Large Tool Box With Grease Gun Holder



Perfectly Matched Hydraulic System

Hitachi expertly matches the engine to the hydraulic pumps and control valves for the best response and longest life possible. The pumps are designed to work specifically with the Isuzu engine – regardless of rpm or work load.

Specifications: EX200

Engine

Model	Isuzu A-6BG1T
Type	4-cycle water-cooled, direct injection
Aspiration	Turbocharged
No. of cylinders	6
Rated flywheel horsepower (SAE J1349, net)	132 hp (98 kW) at 1,950 rpm (min-1)
Maximum torque	340 lbf-ft (47 kgf-m) at 1,600 rpm (min-1)
Piston displacement	396 in ³ (6.494 L)
Bore and stroke	4.13" x 4.92" (105 mm x 125 mm)
Batteries	2 x 12 V, 120 AH
Governor	Mechanical, speed control with stepping motor

Hydraulic System

- Work mode selector: General purpose mode / Grading mode / Precision mode / Attachment mode
 - Engine speed sensing system
- | | |
|------------------|--|
| Main pumps | 2 variable displacement axial piston pumps |
| Maximum oil flow | 52.6 US gpm (43.8 Imp gpm, 199 L/min)
each pump |
| Pilot pump | 1 gear pump |
| Maximum oil flow | 8.7 US gpm
(33 L/min, 7.3 Imp gpm) each pump |

Hydraulic Motors

- Travel.....2 variable displacement axial piston motors
- Swing.....1 axial piston motor

Relief Valve Settings

Implement circuit	4,980 psi (350 kgf/cm ²)
Swing circuit	4,480 psi (315 kgf/cm ²)
Travel circuit	4,980 psi (350 kgf/cm ²)
Pilot circuit	540 psi (38 kgf/cm ²)
Power boost	5,260 psi (370 kgf/cm ²)

Hydraulic Cylinders

High-strength piston rods and tubes. Cylinder cushion mechanisms are provided in all cylinders to absorb shock when pistons reach their stroke ends.

Dimensions

	Qty	Bore	Rod diameter
Boom	2	4.72" (120 mm)	3.35" (85 mm)
Arm	1	5.12" (130 mm)	3.74" (95 mm)
Bucket	1	4.33" (110 mm)	2.95" (75 mm)

Hydraulic Filters

Hydraulic circuits use high quality hydraulic filters. A suction filter is incorporated in the suction line, and 10 micron full-flow filters in the return line and swing/travel motor drain lines.

Service Refill Capacities

	US gal	Liters	Imp gal
Fuel tank	81.9	310.0	68.2
Engine coolant	6.1	23.0	5.1
Engine oil	6.6	25.0	5.5
Swing mechanism	2.2	8.2	1.8
Travel final device (each side)	1.5	5.5	1.2
Hydraulic system	52.8	200.0	44.0
Hydraulic tank (Reference oil level)	35.7	135.0	29.7

Controls

Pilot controls. Hitachi's original shockless valve and quick warm-up system built in the pilot circuit. Hydraulic warm-up control system for engine and hydraulic oil.

- Implement levers.....2
- Travel levers with pedals.....2

Upperstructure

Revolving Frame

Welded sturdy box construction, using heavy-gauge steel plates for ruggedness. D-section frame for resistance to deformation.

Swing Mechanism

Axial piston motor with planetary reduction gear is bathed in oil. Swing circle is single-row, shear-type ball bearing with induction-hardened internal gear. Internal gear and pinion gear are immersed in lubricant. Swing parking brake is spring-set/hydraulic-released disc type.

Swing speed.....13.9 rpm (min-1)

Operator's Cab

Independent roomy cab, 40" (1 005 mm) wide by 66" (1 665 mm) high, conforming to ISO* Standards. Reinforced glass windows on 4 sides for excellent visibility. Front windows (upper and lower) can be opened. Adjustable, reclining seat with armrests; movable with or without control levers.

* International Standardization Organization

Undercarriage

Tracks

Tractor-type undercarriage. Welded track frame, using selected materials. Side frame welded to track frame. Lubricated track rollers, idlers, and sprockets with floating seals. Track shoes with triple grousers made of induction-hardened rolled alloy. Flat and triangular shoes are also available. Heat-treated connecting pins with dirt seals. Hydraulic (grease) track adjusters with shock-absorbing recoil springs.

Numbers of Rollers and Shoes on Each Side

Upper rollers2
Lower rollers7 EX200
Track shoes46 EX200
49 EX200LC
Track guard1 EX200
1 EX200LC

Traction Device

Each track driven by 2-speed axial piston motor through planetary reduction gear for counter rotation of the tracks. Sprockets are replaceable. Parking brake is spring-set/hydraulic-released disc type. Travel shockless relief valve built in travel motor absorbs shocks when stopping travel, ensuring smooth stops.

Automatic transmission system: High - Low.

Travel speedsHigh: 0 to 3.4 mph (5.5 km/h)

Low: 0 to 2.2 mph (3.5 km/h)

Maximum traction force.....42,020 lbf (19 060 kgf)

Gradeability.....35° (70% continuous)

These specifications are subject to change without notice. Illustrations and photos show the standard models, and may or may not include optional equipment, accessories, and all standard equipment with some differences in color and features.

Weights and Ground Pressure

Equipped with 18' 8" (5.68 m) boom, 9' 7" (2.91 m) arm and 1.05 yd³ (.80 m³: PCSA heaped) bucket.

Shoe type	Shoe width	Operating weight	Ground pressure
Triple grouser	24" (600 mm)	42,300 lb (19 200 kg)	6.26 psi (0.44 kgf/cm ²)
	28" (700 mm)	43,400 lb (19 700 kg)	5.97 psi (0.42 kgf/cm²)
	31" (800 mm)	43,900 lb (19 900 kg)	4.83 psi (0.34 kgf/cm ²)
Flat	24" (600 mm)	44,100 lb (20 000 kg)	6.54 psi (0.46 kgf/cm ²)
	30" (760 mm)	45,000 lb (20 400 kg)	6.11 psi (0.43 kgf/cm²)
Triangular	30" (760 mm)	45,000 lb (20 400 kg)	5.12 psi (0.36 kgf/cm ²)
	35" (900 mm)	46,100 lb (20 900 kg)	4.55 psi (0.32 kgf/cm ²)

Figures in **bold** are for the EX200LC.

Weights of the basic machines [including 9,800 lb (4 450 kg) counterweight and triple grouser shoes, excluding front-end attachment, fuel, hydraulic oil, engine oil, and coolant etc.] are:

- EX200.....33,300 lb (15 100 kg) with 24" (600 mm) shoes
- EX200LC.....35,900 lb (16 300 kg) with 31" (800 mm) shoes

Bucket Selection Chart Bucket capacity indicated is SAE heaped.

Material (loose weight)	General-Purpose Bucket*		Heavy-Duty Bucket*	
3,400 - 3,100 lb/yd ³ (2 020 - 1 840 kg/m ³)	1.38 yd ³	1.1 m ³	1.25 yd ³	1.0 m ³
Sand and gravel, wet	1.38 yd ³	1.1 m ³	1.25 yd ³	1.0 m ³
Sand, wet				
2,900 - 2,550 lb/yd ³ (1 720 - 1 510 kg/m ³)	1.50 yd ³	1.1 m ³	1.38 yd ³	1.1 m ³
Sand and gravel, dry	1.50 yd ³	1.1 m ³	1.38 yd ³	1.1 m ³
Sand, moist	1.38-1.75 yd ³	1.1-1.3 m ³	1.25-1.50 yd ³	1.0-1.1 m ³
Rock, granite, blasted and broken	1.50 yd ³	1.1 m ³	1.38 yd ³	1.1 m ³
Clay, wet	1.50 yd ³	1.1 m ³	1.38 yd ³	1.1 m ³
Earth, wet	1.12-1.50 yd ³	0.9-1.1 m ³	1.00-1.38 yd ³	0.8-1.1 m ³
Limestone, broken or crushed	1.38-1.50 yd ³	1.1 m ³	1.38 yd ³	1.1 m ³
Earth, dry				
2,500 - 2,100 lb/yd ³ (1 480 - 1 250 kg/m ³)	1.12-1.50 yd ³	0.9-1.1 m ³	1.38 yd ³	1.1 m ³
Clay, dry	1.75 yd ³	1.3 m ³	1.50 yd ³	1.1 m ³
Sand, dry	1.75 yd ³	1.3 m ³	1.50 yd ³	1.1 m ³
Shale	1.75 yd ³	1.3 m ³	1.50 yd ³	1.1 m ³
Earth, loam	1.38-1.75 yd ³	1.1-1.3 m ³	1.25-1.50 yd ³	1.0-1.1 m ³
Caliche				
1,780 - 1,170 lb/yd ³ (1 050 - 690 kg/m ³)	2.25 yd ³	1.7 m ³	-	-
Coal	2.50 yd ³	1.9 m ³	-	-
Topsoil	3.50 yd ³	2.7 m ³	-	-
Peat, wet				
950 - 700 lb/yd ³ (560 - 420 kg/m ³)	4.00 yd ³	3.1 m ³	-	-
Cinders	5.50 yd ³	4.2 m ³	-	-
Peat, dry	6.50 yd ³	5.0 m ³	-	-
Wood chips				

Buckets

Capacity	Width	No. of Teeth	Weight	Recommendation							
				EX200			EX200LC				
				7'3" (2.22m) arm	9'7" (2.91m) arm	14'6" (4.41m ³) arm	7'3" (2.22m) arm	9'7" (2.91m) arm	14'6" (4.41m ³) arm		
PCSA heaped	CECE heaped	Without side cutters	With side cutters								
0.67 yd ³ (0.51 m ³)	0.45 m ³	28" (720 mm)	33" (850 mm)	3	1,150 lb (520 kg)	●	●	◆	●	●	◆
1.05 yd ³ (0.80 m ³)	0.70 m ³	41" (1 030 mm)	45" (1 140 mm)	5	1,480 lb (670 kg)	●	●	-	●	●	-
1.19 yd ³ (0.91 m ³)	0.80 m ³	45" (1 150 mm)	50" (1 280 mm)	5	1,540 lb (700 kg)	●	◆	-	●	●	-
1.44 yd ³ (1.10 m ³)	0.90 m ³	52" (1 330 mm)	58" (1 460 mm)	6	1,680 lb (760 kg)	◆	-	-	◆	◆	-
1.57 yd ³ (1.20 m ³)	1.00 m ³	57" (1 450 mm)	-	6	1,480 lb (670 kg)	■	-	-	■	-	-
*1 1.05 yd ³ (0.80 m ³)	0.70 m ³	41" (1 030 mm)	45" (1 140 mm)	5	1,700 lb (770 kg)	●	●	-	●	●	-
*2 1.05 yd ³ (0.80 m ³)	0.70 m ³	41" (1 030 mm)	45" (1 140 mm)	5	1,700 lb (770 kg)	●	●	-	●	●	-
*1 1.19 yd ³ (0.91 m ³)	0.80 m ³	45" (1 150 mm)	50" (1 280 mm)	5	1,790 lb (810 kg)	●	●	-	●	●	-
Ripper bucket: 0.78 yd ³ (0.60 m ³ : CECE heaped), Width 31" (800 mm)				3	2,090 lb (950 kg)	⚙	-	-	⚙	-	-
One-point ripper				1	1,210 lb (550 kg)	⚙	-	-	⚙	-	-
Clamshell bucket: 0.78 yd ³ (0.60 m ³ : CECE heaped), Width 37" (940 mm)				8	2,730 lb (1 240 kg)	●	●	-	●	●	-
Slope-finishing blade: Width 43" (1 100 mm), length 87" (2 200 mm)				1	1,520 lb (690 kg)	◇	◇	-	◇	◇	-

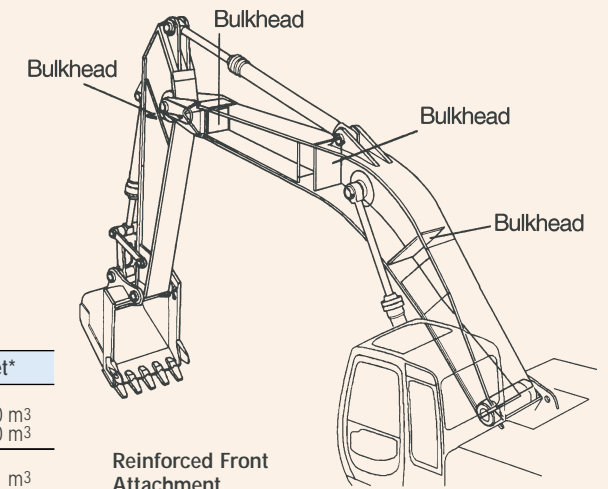
Backhoe Attachments

Boom and arms are of welded, box-section design.

- Boom Length: 18' 8" (5.68 m)
- Arms available in lengths: 7'3" (2.22 m)
- 9'7" (2.91 m)
- 14'6" (4.41 m)*

Bucket is of welded steel structure. Side clearance adjustment mechanism provided on the bucket joint.

* 9'7" (2.91 m) arm + 4'11" (1.50 m) extension arm



Reinforced Front Attachment

Bulkheads are provided inside the front attachment to resist torsion and thickened plates are used in areas subject to stress concentration for added durability in tough operations.

* Contact your Hitachi dealer for optimum, bucket and attachment selections. These recommendations are for general conditions and average use. Larger buckets may be possible for flat and level operations, less compacted materials, and volume loading applications such as mass excavation applications in ideal conditions. Smaller buckets are recommended for adverse conditions such as off-level applications and uneven surfaces.

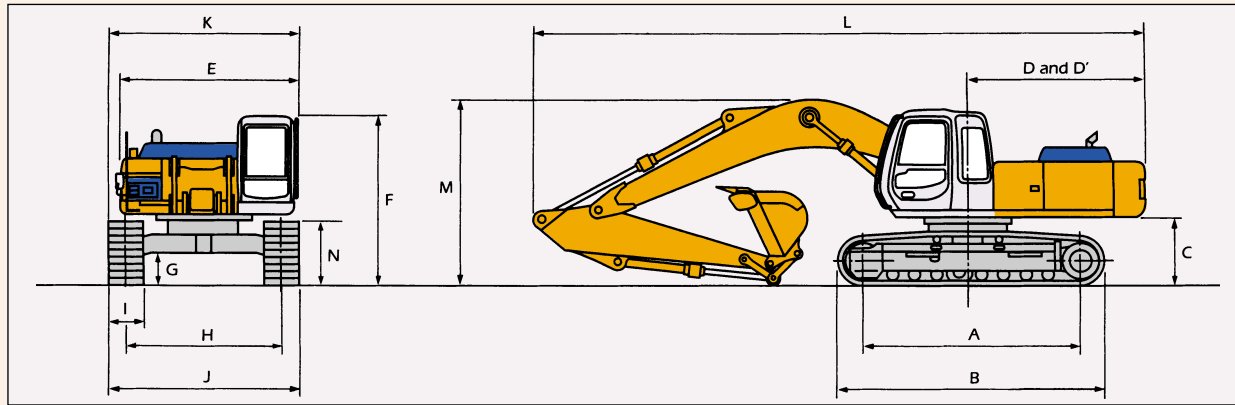
● Suitable for materials with density of 3,370 lb/yd³ (2 000 kg/m³) or less
◆ Suitable for materials with density of 2,700 lb/yd³ (1 600 kg/m³) or less
■ Suitable for materials with density of 1,850 lb/yd³ (1 100 kg/m³) or less
⚙ Heavy-duty service ◆ Slope finishing service - Not recommended

Specifications: EX200

Lifting Capacities: EX200

EX200/EX200LC

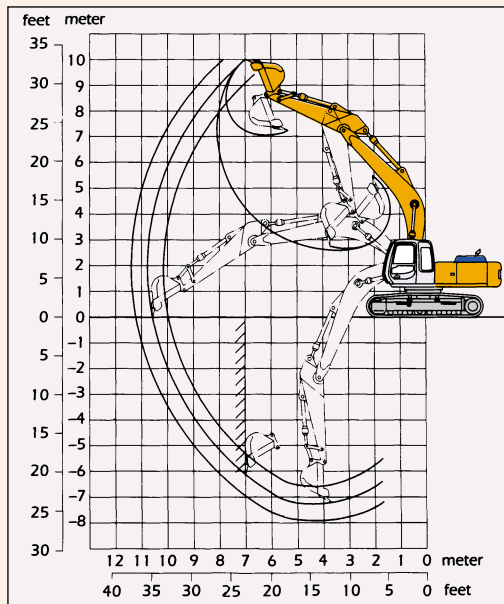
Dimensions



	EX200	EX200LC
A Distance between tumbler	11'1" (3 370 mm)	12'0" (3 660 mm)
B Undercarriage length	13'8" (4 170 mm)	14'8" (4 460 mm)
* C Counterweight clearance	3'5" (1 030 mm)	3'5" (1 030 mm)
D Rear-end swing radius	9'0" (2 750 mm)	9'0" (2 750 mm)
D' Rear-end length	8'11" (2 720 mm)	8'11" (2 720 mm)
E Overall width of upperstructure	8'11" (2 710 mm)	8'11" (2 710 mm)
F Overall height of cab	9'5" (2 870 mm)	9'5" (2 870 mm)
* G Min. ground clearance	1'6" (450 mm)	1'6" (450 mm)
H Track gauge	7'3" (2 200 mm)	7'10" (2 390 mm)
I Track shoe width	24" (600 mm)	31" (800 mm)
J Undercarriage width	9'2" (2 800 mm)	10'6" (3 190 mm)
K Overall width	9'5" (2 860 mm)	10'6" (3 190 mm)
L Overall length		
With 7'3" (2.22 m) arm	31'7" (9 620 mm)	31'7" (9 620 mm)
With 9'7" (2.91 m) arm	31'2" (9 500 mm)	31'2" (9 500 mm)
With 14'6" (4.41 m) arm	31'0" (9 460 mm)	31'0" (9 460 mm)
M Overall height of boom		
With 7'3" (2.22 m) arm	10'2" (3 090 mm)	10'2" (3 090 mm)
With 9'7" (2.91 m) arm	9'9" (2 970 mm)	9'9" (2 970 mm)
With 14'6" (4.41 m) arm	11'8" (3 550 mm)	11'8" (3 550 mm)
N Track height		
With triple grouser shoes	3'0" (910 mm)	3'0" (910 mm)

*Excluding track shoe lug

Working Ranges

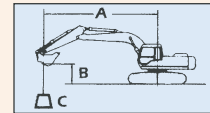


	EX200/EX200LC		
Arm length	7'3" (2.22 m)	9'7" (2.91 m)	14'6" (4.41 m)*
A Max. digging reach	30'4" (9 250 mm)	32'6" (9 910 mm)	36'11" (11 260 mm)
A' Max. digging reach (on ground)	29'9" (9 080 mm)	32'0" (9 750 mm)	36'5" (11 100 mm)
B Max. digging depth	19'7" (5 980 mm)	21'11" (6 670 mm)	26'9" (8 160 mm)
B' Max. digging depth (8' level)	18'10" (5 740 mm)	21'4" (6 490 mm)	26'4" (8 030 mm)
C Max. cutting height	30'1" (9 170 mm)	31'6" (9 600 mm)	33'6" (10 220 mm)
D Max. dumping height	21'0" (6 390 mm)	22'3" (6 780 mm)	24'4" (7 410 mm)
E Min. swing radius	11'7" (3 530 mm)	11'7" (3 540 mm)	11'7" (3 540 mm)
F Max. vertical wall	16'10" (5 140 mm)	19'10" (6 050 mm)	24'9" (7 540 mm)
Bucket digging force**	ISO: 30,200 lbf (13 700 kgf) SAE: PCSA: 26,900 lbf (12 200 kgf)	ISO: 28,400 lbf (12 900 kgf) SAE: PCSA: 21,200 lbf (9 600 kgf)	ISO: 16,300 lbf (7 400 kgf) SAE: PCSA: 15,900 lbf (7 200 kgf)
Arm crowd force**	ISO: 17,100 lbf (7 700 kgf) SAE: PCSA: 15,900 lbf (7 200 kgf)	ISO: 22,300 lbf (10 100 kgf) SAE: PCSA: 21,200 lbf (9 600 kgf)	ISO: 16,300 lbf (7 400 kgf) SAE: PCSA: 15,900 lbf (7 200 kgf)

Excluding track shoe lug *9'7" (2.91 m) arm + 4'11" (1.50 m) extension arm ** At power boost

Rating over side or 360 degrees
Rating over front

Unit Measure:
1,000 lb (1 000 kg)



a: Load radius
b: Load point height
c: Lifting capacity

EX200

Conditions	Load point height ft in	Load radius										At max. reach					
		5' (1.52 m)		10' (3.05 m)		15' (4.57 m)		20' (6.10 m)		25' (7.62 m)				ft in (m)			
Boom: 18'8" (5.68 m) Arm: 7'3" (2.22 m) Bucket: PCSA 1.05 yd ³ (.80 m ³) Shoes: 24" (600 mm)	20' (6.10 m)							8.88 (4.03)	*9.19 (4.17)					5.85 (2.65)	*7.20 (3.27)	25'7" (7.80 m)	
	15' (4.57 m)							8.70 (3.95)	*9.82 (4.45)					4.84 (2.20)	*7.18 (3.26)	27'11" (8.51 m)	
	10' (3.05 m)					12.90 (5.85)	*14.90 (6.76)	8.26 (3.75)	*11.40 (5.17)	5.66 (2.57)	8.95 (4.06)			4.36 (1.98)	6.99 (3.17)	29'0" (8.84 m)	
	5' (1.52 m)							7.78 (3.53)	12.50 (5.67)	5.45 (2.47)	8.73 (3.96)			4.21 (1.91)	6.83 (3.10)	29'2" (8.89 m)	
	0 (Ground)					11.40 (5.17)	19.10 (8.66)	7.44 (3.37)	12.10 (5.49)	5.28 (2.40)	8.54 (3.87)			4.38 (1.99)	7.11 (3.23)	28'3" (8.61 m)	
	-5' (-1.52 m)					11.30 (5.13)	19.10 (8.66)	7.31 (3.32)	11.90 (5.40)	5.23 (2.37)	8.49 (3.85)			4.96 (2.25)	8.01 (3.63)	26'2" (7.98 m)	
	-10' (-3.05 m)					22.80 (10.34)	*25.60 (11.61)	11.50 (5.22)	*19.10 (8.66)	7.38 (3.35)	12.00 (5.44)			6.40 (2.90)	*9.52 (4.32)	22'6" (6.86 m)	
	-15' (-4.57 m)							11.90 (5.40)	*15.40 (6.99)								

Boom: 18'8" (5.68 m) Arm: 9'7" (2.91 m) Bucket: PCSA 1.05 yd ³ (.80 m ³) Shoes: 24" (600 mm)	20' (6.10 m)							*7.71 (3.50)	*7.71 (3.50)					*4.31 (1.96)	*4.31 (1.96)	28'1" (8.56 m)
	15' (4.57 m)							*8.47 (3.84)	*8.47 (3.84)	5.91 (2.68)	*8.10 (3.67)			4.17 (1.89)	*4.28 (1.94)	30'2" (9.19 m)
	10' (3.05 m)					*12.70 (5.76)	*12.70 (5.76)	8.41 (3.81)	*10.20 (4.63)	5.72 (2.59)	9.03 (4.10)			3.78 (1.71)	*4.42 (2.00)	31'3" (9.53 m)
	5' (1.52 m)					12.20 (5.53)	*17.10 (7.76)	7.88 (3.57)	*12.30 (5.58)	5.46 (2.48)	8.75 (3.97)			3.65 (1.66)	*4.73 (2.15)	31'4" (9.55 m)
	0 (Ground)					11.50 (5.22)	19.30 (8.75)	7.46 (3.38)	12.10 (5.49)	5.24 (2.38)	8.50 (3.86)			3.76 (1.71)	*5.27 (2.39)	30'6" (9.30 m)
	-5' (-1.52 m)					*12.60 (5.72)	*12.60 (5.72)	11.20 (5.08)	19.00 (8.62)	7.23 (3.28)	11.90 (5.40)	5.11 (2.32)	8.37 (3.80)	4.18 (1.90)	*6.18 (2.80)	28'7" (8.71 m)
	-10' (-3.05 m)					22.30 (10.12)	*24.90 (11.29)	11.30 (5.13)	19.00 (8.62)	7.20 (3.27)	11.80 (5.35)	5.14 (2.33)	8.40 (3.81)	5.15 (2.34)	*7.83 (3.55)	25'5" (7.75 m)
	-15' (-4.57 m)					22.80 (10.34)	*24.40 (11.07)	11.50 (5.22)	*17.5 (7.94)	7.42 (3.37)	12.10 (5.49)			7.70 (3.49)	*7.84 (3.56)	20'2" (6.15 m)

Notes: 1. Ratings are based on SAE J1097.
2. Lifting capacity of the Super EX Series does not exceed 75% of tipping load with the machine on firm, level ground or 87% of full hydraulic capacity.
3. The load point is a hook (not standard equipment) loaded on the back of the bucket.
4. * Indicates load limited by hydraulic capacity.

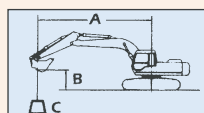
SUNIGHT
excavatorhunter.com

Lifting Capacities: EX200

Specifications: EX200

Rating over side or 360 degrees
Rating over front

Unit Measure:
1,000 lb
(1 000 kg)



a: Load radius
b: Load point height
c: Lifting capacity

EX200LC

Conditions	Load point height ft in	Load radius										At max. reach				
		5' (1.52 m)		10' (3.05 m)		15' (4.57 m)		20' (6.10 m)		25' (7.62 m)				ft in (m)		
Boom: 18'8" (5.68 m) Arm: 7'3" (2.22 m) Bucket: PCSA: 1.05 yd ³ (.80 m ³) Shoes: 31" (800 mm)	20' (6.10 m)							* 9.19 (4.17)	* 9.19 (4.17)					6.77 (3.07)	* 7.20 (3.27)	25'7" (7.80 m)
	15' (4.57 m)							* 9.82 (4.45)	* 9.82 (4.45)					5.65 (2.56)	* 7.18 (3.26)	27'11" (8.51 m)
	10' (3.05 m)						* 14.90 (6.76)	* 14.90 (6.76)	9.55 (4.33)	* 11.40 (5.17)	6.60 (2.99)	* 10.00 (4.54)		5.13 (2.33)	* 7.43 (3.37)	29'0" (8.84 m)
	5' (1.52 m)								9.06 (4.11)	* 13.30 (6.03)	6.39 (2.90)	10.40 (4.72)		4.98 (2.26)	* 7.96 (3.61)	29'2" (8.89 m)
	0 (Ground)					13.40 (6.08)	* 20.90 (9.48)	8.72 (3.96)	14.40 (6.53)	6.22 (2.82)	10.20 (4.63)			5.17 (2.35)	8.47 (3.84)	28'3" (8.61 m)
	-5' (-1.52 m)					13.30 (6.03)	* 20.70 (9.39)	8.58 (3.89)	14.30 (6.49)	6.17 (2.80)	10.10 (4.58)			5.84 (2.65)	9.54 (4.33)	26'2" (7.98 m)
	-10' (-3.05 m)			* 25.60 (11.61)	* 25.60 (11.61)	13.40 (6.08)	* 19.10 (8.66)	8.65 (3.92)	14.20 (6.44)					7.48 (3.39)	* 9.52 (4.32)	22'6" (6.86 m)
	-15' (-4.57 m)					13.90 (6.31)	* 15.40 (6.99)									
Boom: 18'8" (5.68 m) Arm: 9'7" (2.91 m) Bucket: PCSA: 1.05 yd ³ (.80 m ³) Shoes: 31" (800 mm)	20' (6.10 m)							* 7.71 (3.50)	* 7.71 (3.50)					* 4.31 (1.96)	* 4.31 (1.96)	28'1" (8.56 m)
	15' (4.57 m)							* 8.47 (3.84)	* 8.47 (3.84)	6.85 (3.11)	* 8.10 (3.67)			* 4.28 (1.94)	* 4.28 (1.94)	30'2" (9.19 m)
	10' (3.05 m)					* 12.70 (5.76)	* 12.70 (5.76)	9.71 (4.40)	* 10.20 (4.63)	6.66 (3.02)	* 9.06 (4.11)			* 4.42 (2.00)	* 4.42 (2.00)	31'3" (9.53 m)
	5' (1.52 m)					14.20 (6.44)	* 17.10 (7.76)	9.17 (4.16)	* 12.30 (5.58)	6.40 (2.90)	* 10.10 (4.58)			4.35 (1.97)	* 4.73 (2.15)	31'4" (9.55 m)
	0 (Ground)					13.40 (6.08)	* 20.00 (9.07)	8.73 (3.96)	* 14.00 (6.35)	6.17 (2.80)	10.10 (4.58)			4.49 (2.04)	* 5.27 (2.39)	30'6" (9.30 m)
	-5' (-1.52 m)			* 12.60 (5.72)	* 12.60 (5.72)	13.20 (5.99)	* 20.80 (9.43)	8.50 (3.86)	14.20 (6.44)	6.04 (2.74)	10.00 (4.54)			4.97 (2.25)	* 6.18 (2.80)	28'7" (8.71 m)
	-10' (-3.05 m)			* 24.90 (11.29)	* 24.90 (11.29)	13.20 (5.99)	* 20.10 (9.12)	8.47 (3.84)	14.20 (6.44)	6.08 (2.76)	10.00 (4.54)			6.07 (2.75)	* 7.83 (3.55)	25'5" (7.75 m)
	-15' (-4.57 m)			* 24.40 (11.07)	* 24.40 (11.07)	13.50 (6.12)	* 17.50 (7.94)	8.69 (3.94)	* 12.60 (5.72)					* 7.84 (3.56)	* 7.84 (3.56)	20'2" (6.15 m)

Notes: 1. Ratings are based on SAE J1097.
2. Lifting capacity of the Super EX Series does not exceed 75% of tipping load with the machine on firm, level ground or 87% of full hydraulic capacity.
3. The load point is a hook (not standard equipment) loaded on the back of the bucket.
4. * Indicates load limited by hydraulic capacity.

Standard Equipment

Standard equipment may vary by country, so please consult your Hitachi dealer for details.

ENGINE

- H/P mode control
- E mode control
- 40 A alternator
- Dry-type air filter with evacuator valve (with safety element)
- Cartridge-type engine oil filter
- Cartridge-type engine oil bypass filter
- Cartridge-type fuel filter
- Air cleaner (double element)
- Radiator and oil cooler with dust-protection net
- Radiator reserve tank
- Fan guard
- Isolation-mounted engine
- Auto-idle system

HYDRAULIC SYSTEM

- Work mode selector
- Engine speed sensing system
- E-P control system
- Quick warm-up system for pilot circuit
- Shockless valve in pilot circuit
- Boom-arm anti-drift valve
- Control valve with main relief valve
- Extra port for control valve
- Suction filter
- Full-flow filter
- Pilot filter

CAB

- All-weather sound-suppressed steel cab
- Reinforced, tinted (bronze color) glass windows
- 6 fluid-filled elastic mounts
- Front and left side windows open
- Intermittent retractable windshield wipers
- Front window washer
- Adjustable reclining suspension seat with adjustable armrests
- Footrest
- Electric double horn
- Auto-tuning radio with digital clock
- Auto-idle switch
- Seat belt
- Cigarette lighter
- Ashtray
- Parcel pocket
- Glove compartment
- Floor mat
- Heater
- Pilot control shut-off lever
- Air conditioning
- Hot & Cool box

MONITOR SYSTEM

- Meters:
 - Hourmeter, engine coolant temperature gauge, fuel meter.
- Warning lamps:
 - Alternator charge, engine oil pressure, engine overheat, air cleaner clog, minimum fuel level.
- Pilot lamps:
 - Engine preheat, engine oil level, engine coolant level, hydraulic oil level.
- Alarm buzzers:
 - Engine oil pressure and engine overheat.

LIGHTS

- 2 working lights

UPPERSTRUCTURE

- Undercover
- 9,800 lb (4 450 kg) counterweight
- Fuel level float
- Hydraulic oil level gauge
- Tool box
- Utility space
- Right and left side mirrors
- Swing parking brake

TRAVEL MOTION ALARM DEVICE

- Travel parking brake
- Travel motor covers
- Track guards and hydraulic track adjuster
- Bolt-on sprocket
- Upper rollers and lower rollers
- Reinforced track links with pin seals
- 31" (800 mm) triple grouser shoes

FRONT ATTACHMENTS

- Bucket clearance adjust mechanism
- Monolithically cast bucket link A
- Centralized lubrication system
- Dirt seals on all bucket pins
- 9'7" (2.91 m) arm

MISCELLANEOUS

- Standard tool kit
- Lockable machine covers
- Lockable fuel filling cap
- Slip-resistant tapes and handrails

Optional Equipment

Optional equipment may vary by country, so please consult your Hitachi dealer for details.

- Hose rupture valves
- Electric fuel refilling pump
- Swing motion alarm device with lamps
- Additional pump
- Piping kit for extra valve port
- Pre-cleaner

- Tropical cover
- Auto-lubrication system
- Swing cushion valve
- Front glass lower guard
- Full track guard

JC Machinery

SUNIGHT

excavatorhunter.com